

Domain Name - mpouch.com

WhoIs Information

Registered : No

Domain age : 12 Years 8 Months 16 Days

Tech email : Select Contact Domain Holder link at
<https://www.godaddy.com/whois/results.aspx?domain=MPOUCH.COM>

Name servers : NS06.DOMAINCONTROL.COM

Created at : 15-May-2012

Changed at : 16-May-2020

Expire at : 15-May-2021

Registrant name :

Admin name :

Registrant country :  US

Admin country : 

Registrant phone :

Admin phone :

Moz information

Subdomain normalized : 0.01048700325

Subdomain raw : 0.001048700302

Url normalized : 3.5

Url raw : 0.349999994

Http status code : 307

Domain authority : 27

Page authority : 35

External quality link : 2

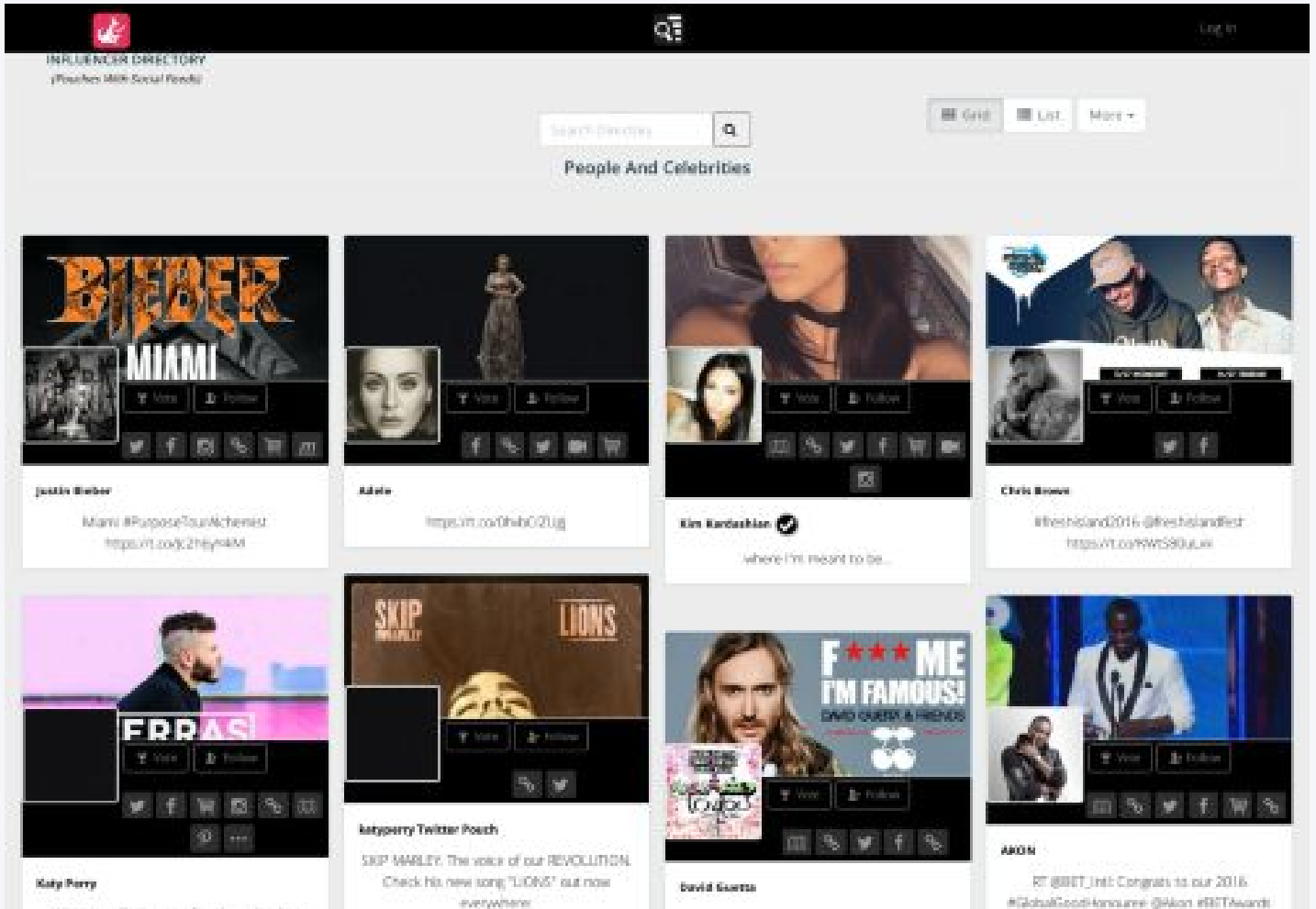
Links : 9

Link information

Backlink count : 2

Total link count : 9

Mozrank : 3.5



Mobile Friendly Check

Performance : 5.75

Emulated Form Factor **Mobile**

Locale **En-US**

Category **Performance**

Field Data

Over the last 30 days, the field data shows that this page has an **Moderate** speed compared to other pages in the Chrome User Experience Report. **We are showing The 75th percentile of FCP and The 95th percentile of FID**

First Contentful Paint (FCP)

Metric Category

First Input Delay (FID)

Metric Category

Overall Category



Origin Summary

All pages served from this origin have a **Slow** speed compared to other pages in the Chrome User Experience Report Over the last 30 days. To view suggestions tailored to each page, analyze individual page URLs.

First Contentful Paint (FCP)

Metric Category

First Input Delay (FID)

Metric Category

Overall Category

Lab Data

First Contentful Paint

First Contentful Paint marks the time at which the first text or image is painted. [Learn more](#)

6.3 s

First Meaningful Paint

First Meaningful Paint measures when the primary content of a page is visible. [Learn more](#)

6.5 s

Speed Index

Speed Index shows how quickly the contents of a page are visibly populated. [Learn more](#)

12.7 s

First CPU Idle

First CPU Idle marks the first time at which the page's main thread is quiet enough to handle input. [Learn more](#)

11.7 s

Time to Interactive

Time to interactive is the amount of time it takes for the page to become fully interactive. [Learn more](#)

30.4 s

Max Potential First Input Delay

The maximum potential First Input Delay that your users could experience is the duration, in milliseconds, of the longest task.

[Learn more](#)

730 ms

Audit Data

Keep request counts low and transfer sizes small

To set budgets for the quantity and size of page resources, add a budget.json file. [Learn More](#)

153 requests • 9,066 KiB

Eliminate render-blocking resources

Resources are blocking the first paint of your page. Consider delivering critical JS/CSS inline and deferring all non-critical JS/styles. [Learn More](#)

Potential savings of 4,660 ms

Efficiently encode images

Optimized images load faster and consume less cellular data. [Learn More](#)

Enable text compression

Text-based resources should be served with compression (gzip, deflate or brotli) to minimize total network bytes. [Learn More](#)

Serve static assets with an efficient cache policy

A long cache lifetime can speed up repeat visits to your page. [Learn More](#)

70 resources found

Reduce the impact of third-party code

Third-party code can significantly impact load performance. Limit the number of redundant third-party providers and try to load third-party code after your page has primarily finished loading. [Learn More](#)

Third-party code blocked the main thread for 710 ms

Network Round Trip Times

Network round trip times (RTT) have a large impact on performance. If the RTT to an origin is high, it's an indication that servers closer to the user could improve performance. [Learn More](#)

0 ms

Estimated Input Latency

Estimated Input Latency is an estimate of how long your app takes to respond to user input, in milliseconds, during the busiest 5s window of page load. If your latency is higher than 50 ms, users may perceive your app as laggy. [Learn More](#)

230 ms

First Contentful Paint (3G)

First Contentful Paint 3G marks the time at which the first text or image is painted while on a 3G network. [Learn More](#)

13182 ms

Total Blocking Time

Sum of all time periods between FCP and Time to Interactive, when task length exceeded 50ms, expressed in milliseconds.

1,300 ms

Reduce JavaScript execution time

Consider reducing the time spent parsing, compiling, and executing JS. You may find delivering smaller JS payloads helps with this. [Learn More](#)

4.1 s

Defer offscreen images

Consider lazy-loading offscreen and hidden images after all critical resources have finished loading to lower time to interactive. [Learn More](#)

Potential savings of 5,152 KiB

Server Backend Latencies

Server latencies can impact web performance. If the server latency of an origin is high, it's an indication the server is overloaded or has poor backend performance. [Learn More](#)

0 ms

Properly size images

Serve images that are appropriately-sized to save cellular data and improve load time. [Learn More](#)

Potential savings of 53 KiB

Remove unused CSS

Remove dead rules from stylesheets and defer the loading of CSS not used for above-the-fold content to reduce unnecessary bytes consumed by network activity. [Learn More](#)

Potential savings of 28 KiB

Avoid enormous network payloads

Large network payloads cost users real money and are highly correlated with long load times. [Learn More](#)

Total size was 9,066 KiB

Minimize main-thread work

Consider reducing the time spent parsing, compiling and executing JS. You may find delivering smaller JS payloads helps with this. [Learn More](#)

7.3 s

Serve images in next-gen formats

Image formats like JPEG 2000, JPEG XR, and WebP often provide better compression than PNG or JPEG, which means faster downloads and less data consumption. [Learn More](#)

Potential savings of 2,289 KiB

Avoid chaining critical requests

The Critical Request Chains below show you what resources are loaded with a high priority. Consider reducing the length of chains, reducing the download size of resources, or deferring the download of unnecessary resources to improve page load.

[Learn More](#)

16 chains found

Avoid enormous network payloads

A large DOM will increase memory usage, cause longer [Learn More](#)

1,995 elements

Avoid multiple page redirects

Redirects introduce additional delays before the page can be loaded. [Learn More](#)

Potential savings of 630 ms

Minify JavaScript

Minifying JavaScript files can reduce payload sizes and script parse time. [Learn More](#)

User Timing marks and measures

Consider instrumenting your app with the User Timing API to measure your app's real-world performance during key user experiences. [Learn More](#)

IP Information

ISP : AS63949 Linode, LLC

Ip : 45.33.105.171

Country :  UNITED STATES

City : Fremont

Region : California

Timezone : America/Los_Angeles

Latitude : 37.5483

Longitude : -121.9886

Malware Scan Info

Google safe browser norton : Safe

Norton : untested

Search Engine Index Info

Google index : 4,030

Bing index : 41

Yahoo index : 38

Sites in Same IP

1. pouchtag.com

Related Websites

1.

2. mpouch.com

3. IP-Address-Lookup.com

Social Network Information - mpouch.com

Social Network Information

Facebook share : 0

Pinterest Info : 0

Facebook comment : 0

Xing Info : 0

Facebook like : 0

Buffer Info : 0

Reddit Score : 0

Reddit Ups : 0

Reddit downs : 0

Keyword & Meta Information - mpouch.com

TITLE & METATAGS

Title

People And Celebrities

Viewport

width=device-width, initial-scale=1, maximum-scale=1

Description

When images are simply not enough, pouchtag.com lets you gather a wide variety of internet items to create a single point of knowledge and information.

Keywords

Items, pouches, rss, images, videos, twitter, facebook, fun, pinterest, youtube, vimeo, bing, amazon, searches

Twitter:card

summary_large_image

Twitter:site

@Mobilepouch

Twitter:title

People And Celebrities

Twitter:description

Twitter:creator

@Mobilepouch

Twitter:image

http://www.pouchtag.com/assets/img/icons/mstile-310x310.png

Author

pouchtag.com

Google-site-verification

jh6BHtzvKQRuaKrykgPLmcomiUN1n59ItsINfORgH14

Application-name

pouchtag.com

Msapplication-TileColor

#FFFFFF

Msapplication-TileImage

/assets/img/icons/mstile-144x144.png

Msapplication-square70x70logo

/assets/img/icons/mstile-70x70.png

Msapplication-square150x150logo

/assets/img/icons/mstile-150x150.png

Msapplication-wide310x150logo

/assets/img/icons/mstile-310x150.png

Msapplication-square310x310logo

/assets/img/icons/mstile-310x310.png

Blocked by robots.txt : No

Blocked by meta-robots : No

Links nofollowed by meta-robots : No

Total keywords : 1043

Html headings

H1(0)

No h1 tag found

H2(0)

No h2 tag found

H3(0)

No h3 tag found

H4(1)

1. Pouch Item

H5(0)

No h5 tag found

H6(0)

No h6 tag found

KEYWORD ANALYSIS

== Single word keywords ==

SINGLE KEYWORDS	OCCURRENCES	DENSITY	POSSIBLE SPAM
Follow	47	4.506 %	No
Vote	47	4.506 %	No
RT	13	1.246 %	No
Pouch	9	0.863 %	No
love	4	0.384 %	No
Twitter	4	0.384 %	No

SINGLE KEYWORDS	OCCURRENCES	DENSITY	POSSIBLE SPAM
People	4	0.384 %	No
Policy	4	0.384 %	No
Celebrities	3	0.288 %	No
Sports	3	0.288 %	No
video	3	0.288 %	No
Tv	3	0.288 %	No
News	3	0.288 %	No
Log	3	0.288 %	No
Image	2	0.192 %	No
Justin	2	0.192 %	No
Katy	2	0.192 %	No
Perry	2	0.192 %	No
James	2	0.192 %	No
Share	2	0.192 %	No

== Two words keywords ==

2 WORD PHRASES	OCCURRENCES	DENSITY	POSSIBLE SPAM
Vote Follow	47	4.506 %	No
Twitter Pouch	3	0.288 %	No
People And	3	0.288 %	No
And Celebrities	3	0.288 %	No
out now	3	0.288 %	No
Log In	3	0.288 %	No
Share Earn	2	0.192 %	No
Follow Justin	2	0.192 %	No
Service Acceptable	2	0.192 %	No
Acceptable Use	2	0.192 %	No
Use Policy	2	0.192 %	No
Policy Privacy	2	0.192 %	No
Privacy Policy	2	0.192 %	No
Earn Brands	2	0.192 %	No
on the	2	0.192 %	No
Katy Perry	2	0.192 %	No

2 WORD PHRASES	OCCURRENCES	DENSITY	POSSIBLE SPAM
Terms of	2	0.192 %	No
to be	2	0.192 %	No
now Vote	2	0.192 %	No
a new	2	0.192 %	No

== Three words keywords ==

3 WORD PHRASES	OCCURRENCES	DENSITY	POSSIBLE SPAM
People And Celebrities	3	0.288 %	No
Share Earn Brands	2	0.192 %	No
of Service Acceptable	2	0.192 %	No
Help Pouch Protocol	2	0.192 %	No
Pouch Protocol and	2	0.192 %	No
Protocol and Politeness	2	0.192 %	No
and Politeness Terms	2	0.192 %	No
Politeness Terms of	2	0.192 %	No
Acceptable Use Policy	2	0.192 %	No
Service Acceptable Use	2	0.192 %	No
Log In Help	2	0.192 %	No
Use Policy Privacy	2	0.192 %	No
Policy Privacy Policy	2	0.192 %	No
Vote Follow Justin	2	0.192 %	No
Earn Brands People	2	0.192 %	No
now Vote Follow	2	0.192 %	No
In Help Pouch	2	0.192 %	No
Terms of Service	2	0.192 %	No
httpst... Vote Follow	2	0.192 %	No
And Movies News	2	0.192 %	No

== Four words keywords ==

4 WORD PHRASES	OCCURRENCES	DENSITY	POSSIBLE SPAM
Share Earn Brands People	2	0.192 %	No

4 WORD PHRASES	OCCURRENCES	DENSITY	POSSIBLE SPAM
Log In Help Pouch	2	0.192 %	No
Earn Brands People And	2	0.192 %	No
Use Policy Privacy Policy	2	0.192 %	No
Acceptable Use Policy Privacy	2	0.192 %	No
Service Acceptable Use Policy	2	0.192 %	No
of Service Acceptable Use	2	0.192 %	No
Terms of Service Acceptable	2	0.192 %	No
Politeness Terms of Service	2	0.192 %	No
Protocol and Politeness Terms	2	0.192 %	No
Pouch Protocol and Politeness	2	0.192 %	No
Help Pouch Protocol and	2	0.192 %	No
In Help Pouch Protocol	2	0.192 %	No
and Politeness Terms of	2	0.192 %	No
Brands People And Celebrities	2	0.192 %	No
Tv And Movies News	2	0.192 %	No
People And Celebrities Athletes	2	0.192 %	No
And Celebrities Athletes Sports	2	0.192 %	No
Celebrities Athletes Sports Teams	2	0.192 %	No
Athletes Sports Teams Tv	2	0.192 %	No

Alexa Information - mpouch.com

General information

Domain name : mpouch.com

Global Rank : No data

Daily Time on Site : No data

Search Traffic : No data

Bounce Rate : No data

Total sites link in : 294

Top 5 similar sites by audience overlap

SI	Similar sites	Overlap score
No data found!		

Top 5 keywords by traffic

Keywords	Search Traffic	Share of voice
No data found!		

Top 4 keyword gaps

Keywords driving traffic to competitors, but not to this site	Avg. traffic to competitors	Search popularity
No data found!		

Top 4 easy-to-rank keywords

Popular keywords within this site`s competitive power	Relevance to this site	Search popularity
No data found!		

Top 4 buyer keywords

Keywords that show a high purchase intent	Avg. traffic to competitors	Organic competition
No data found!		

Top 4 optimization opportunities

Very popular keywords already driving some traffic to this site	Search popularity	Organic share of voice
No data found!		

Top 5 referral sites

Sites by how many other sites drive traffic to them	Referral sites
No data found!	

Site flow

Visited just before & right after domain	Visited just before & right after domain percentage
No data found!	

Top 5 audience overlap

Similar sites to this site

Site's overlap score

Alexa rank

No data found!

Top 3 audience geography

Visitors by country

Visitors by country percentage

No data found!